

Invitation for Joining CommTECH Camp Insight 2018

1 message

CommTECH ITS <commtech@its.ac.id>

Fri, Jul 21, 2017 at 2:20 PM

To: international its <internationaloffice.its@gmail.com>

Cc: wahyu islami <wahyuipm141@gmail.com>, Rayhan Shiena <rayhanshiena@gmail.com>, Tripitra wira <tripitrawira@yahoo.com>

Dear Sir/Madam,

Warm greetings from Institut Teknologi Sepuluh Nopember (ITS) Surabaya, Indonesia.

ITS as one of the best research universities in Indonesia would like to invite your students, academic, and non-academic staffs to participate in the Community and Technological Camp (CommTECH) Camp Insight 2018 which will take place in Surabaya Indonesia on **24 January – 6 February 2018**. Designed as a platform to discuss and solve local problems, we modified this program into a 14-day program integrating new concepts and innovations. The participants will be challenged to critically solve real problems using a project based model. The results of this program will not be presented at the exhibition during the closing but will also be implemented by the Surabaya City government.

CommTECH program is a short course program designed to facilitate and share better understanding of complex issues related with the intertwining of societal and technological problems, especially in Indonesia. It is also a platform to open up an opportunity to exchange ideas and to develop a mutual vision for the future of our community. Under the theme, "Solving Local Problems with Global Knowledge", this program provides courses and discussions on particular topics, visitation and discussion with government and non-government agencies, society engagement, Indonesian Language courses, learning traditional music and dances, visit to main tourist destinations, and for sure tasting delicious Indonesian food.

The good news is ITS provides full and partial scholarships for participants from different institutions and countries to join this program.

Detailed information and online registration can be viewed and downloaded from our website:

<http://international.its.ac.id/commtech-insight-2018/>

For CommTECH Camp Insight 2018 we offer 4 courses

*Basopriatno
Wahyuipm141
DR
7 ก.ค. 60*

5167
27 ก.ค. 2560
10/1/17

Sub Course A: Sociopreneurship in Action

The world is continuously facing problems from poverty, health, and climate change which cannot be solved by the government alone. Increasingly, business is seen as one of the initiatives that can drive social changes on a continuous basis. This short program will not only introduce participants to the concept of social enterprise but will also provide experience on how to build a social enterprise. The program will cover important aspects of creating a new venture by generating ideas, brainstorming and prototyping, validating and testing the idea, and developing the right business model

Sub Course B: Sustainable Development in Developing Countries

In this decade, Sustainable Development (SD) has become a growing concern all over the world. Not only become a topic in many conferences, symposiums, and discussions, SD has also become the core of many programs and development projects. In CommTECH Camp Insight 2018, the multiple facets of SD will be discussed and the implementations of SD in developing countries like Indonesia, including sustainable agriculture, sustainable energy, sustainable transportation, sustainable building, sustainable tourism, sustainable life style, sustainable packaging, and sustainable product, will be explored and analysed. This program is designed to suit bachelor, master, even doctoral students with or without specific knowledge in SD.

Sub Course C: Managing Sustainable Coastal Development

The coastal area is a transitional area between land and ocean that has a physical boundary. As the largest archipelago country in the world, Indonesia's coastal areas are very strategic with their comparative and competitive advantages that could be the prime mover of the national development. To optimize the use of marine and coastal resources, policy intervention through spatial planning, government handling, and cooperation between stakeholders including public and private sectors are required. In CommTECH Camp Insight 2018, this sub course will take participants to discuss and simulate the management of coastal planning this archipelago country. The highlights in this subject consist of Coastal Planning Policies, Integrated Coastal Zone Management (ICZM), Coastal Risk Management, and Coastal Tourism. This program is designed to suit bachelor, master, even doctoral students with or without specific knowledge in coastal development and planning.

Sub Course D: Exploring Indonesian Art & Culture

Indonesia is a country that consisted of thousands of islands. Those islands are home of many kinds of ethnics and cultural beliefs. Approximately, there are 1340 ethnics spread across the provinces and each of them has different folkways, habit, even arts and traditions. Because of this diversity, exploring the ethnics & cultures of Indonesia will provide exciting and fascinating experience as participants will give more understanding about Indonesia. This sub course will take the participants to explore

the folkways and cultures through different approach such as understanding Indonesia people through ethno-photography course while taking pictures of beautiful scenery of Indonesia. Not only participants will observe and explore, they will also engage to several activity, such as Traditional Food Packaging and Traditional Toys Workshop. Overall, this program will show you the utilization of the activity above into the society.

Only active lecturers, non-academic staffs & active bachelor, master & doctoral students from any background are eligible for this program.

The fees of this program is USD 1,600. The fees will cover accommodation, local transportation, tuition fee, workshop materials, seminar kits, scheduled meals, Trip to Bromo Mountain, Rafting, airport pick up & drop off services, and vouchers, The participants must be responsible with their roundtrip flight ticket, visa & travel insurance.

We offer full scholarship, 50% scholarship (pay only USD 800) & partial scholarship (pay only USD 1,000) for limited participants. Please register early to secure your participation in this awesome program.

The registration will be opened from 10 July – 29 December 2017.

Please fill in the attached registration form (or download the registration form from the provided link), scan it, and send it to commtech@its.ac.id with the documents below :

- Scanned Passport
- One recommendation letter from your university
- Scanned students/staffs/lecturers I.D or statement letter that you are staff or lecturers from your university

Indonesian Students & The participants of previous CommTECH are not allowed to apply to CommTECH Camp Insight 2018

For further inquiries, please contact Mr. Wahyu or Mr. Rayhan at commtech@its.ac.id / internationaloffice.its@gmail.com

Brief story of past CommTECH programs can be viewed from these links

CommTECH Camp Insight 2017 <https://www.youtube.com/watch?v=4Wz3oGAUJ00>

CommTECH Camp Highlight 2016 <https://www.youtube.com/watch?v=TDck4UD6m-M&t=4s>

CommTECH Camp Insight 2016 <https://www.youtube.com/watch?v=Mh-MRNBrnIA>

CommTECH Camp Highlight 2015 <https://www.youtube.com/watch?v=Q8W8zQS2jMY>

CommTECH Camp Insight 2015 <https://www.youtube.com/watch?v=kvUKCYMoB6M>

CommTECH Camp Highlight 2014 <https://www.youtube.com/watch?v=tohT—xCJg>
CommTECH Camp Highlight 2013 <https://www.youtube.com/watch?v=Ec95BmbGB5>

Please kindly distribute this information to your students, academic, and non-academic staffs. Thank you very much for your kind attention. We look forward to welcoming your students, academic, and non-academic staffs at ITS.


Yours sincerely,


Dr. Maria Anityasari
Director of ITS International Office
Rectorate Building 1st floor
ITS Campus, Sukolilo Surabaya Indonesia 60111
Telp/Fax. +62 31 5923411
Website: www.international.its.ac.id

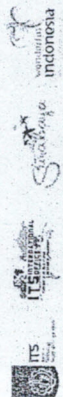
CommTECH Camp Program Team
ITS International Office
email: commtech@its.ac.id / internationaloffice.its@gmail.com
Phone: +62 - 31 592 3411

www.international.its.ac.id
www.its.ac.id

2 attachments

 Brosur CommTECH Insight 2018.pdf
2520K

 CommTECH Camp Insight 2018 Registration Form.doc
1389K



About CommTECH

Continuing the success of 2012 to 2017, this time Community and Technological (CommTECH) Camp, this time ITS again offers a very fascinating program for international partners namely CommTECH Camp Insight 2018. This program provides four sub courses on **Sociopreneurship in Action, Sustainable Development in Developing Country, Managing Sustainable Coastal Management, and Exploring Indonesian Art**. Not only thematic courses, the program will incorporate Indonesian language course, traditional music and dance classes, and batik making. Tasting delicious Indonesian foods and visiting Surabaya community and main tourist destinations will definitely become inseparable parts of the program.

All courses are designed attractively based on Project-based-Learning (PbL) method. Materials have been compiled from many credible resources and added with interesting data and facts that will provide broader and deeper understanding on the topics. "Think Loudly" is a term encouraged in the classroom interaction, in which participants are given great opportunities to articulate their understanding and opinions. This method would provide best learning environment for participants from different countries and background to raise ideas and discuss different perspectives.

This program will be held for 14 days. The fee to join this program is very affordable, i.e USD 1,600. The fee will cover airport pick-up and drop-off; accommodation and all scheduled meals; local transportation; course material; workshop tools and materials such as fabrics, T-shirt and backpack; and site visits. Please note that round-trip flight and health insurance are not part of the fee. Participants should arrange their own health insurance prior to the departure if needed.

Application Procedure

CommTECH Camp Insight 2018 will open registration from **11 July 2017 - 29 December 2017**. Registration form available at www.international.its.ac.id/commtech-insight-2018/

3 types of scholarships are provided as follows:

Full Scholarship (for 10 participants)

50% Scholarship (for 10 participants) - pay USD 800

Partial Scholarship (for 5 participants) - pay USD 1,000

*Scholarship is provided for selected participants from different institutions

- Selected participants with or without scholarship will be notified by email maximum one month after the submission of the registration form
- Participants who have to pay full or partial course fee are requested to pay no later than the appointment date
- Acceptance letter or invitation letter will be provided for visa arrangement

Requirements

- Filled application form (please download from the website)
- Scanned passport
- One recommendation letter from your university
- Scanned student/staff/lecturer ID or statement letter stating that you are a student/staff/lecturers from your university



For further enquiries, please contact Mr. Wahyudi, Mr. Rayhan at commtech@its.ac.id / internationaloffice@its.ac.id

About Surabaya

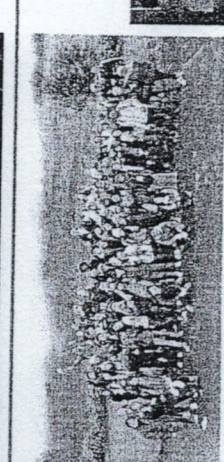
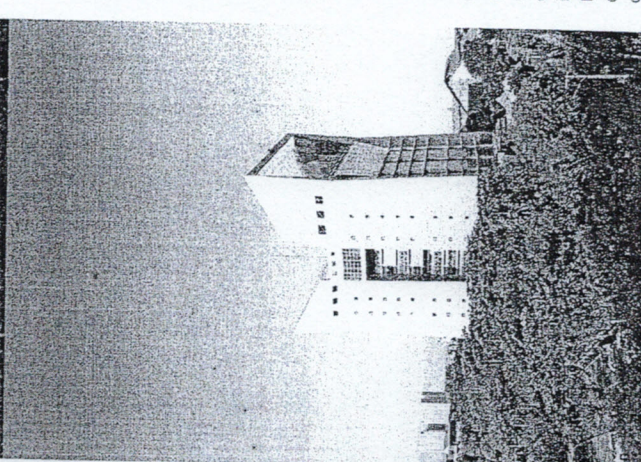
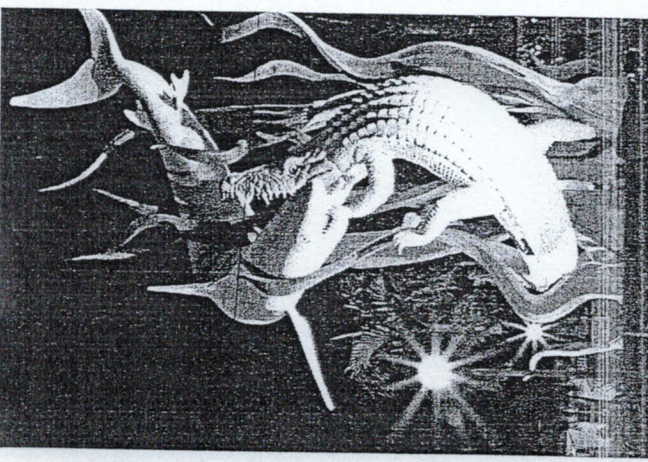
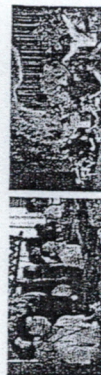
As the second largest city in Indonesia and the capital city of East Java province, Surabaya is well-equipped with public facilities and infrastructures. Surabaya with a population of over 2.7 million is located in the equatorial region. Hence there are only two seasons: a very humid rainy season and a dry season. Surabaya is the main seaport and commercial centre in the Eastern region of Indonesia. Surabaya also known as "City of Heroes" due to the importance of "Sepuluh Nopember (10th of November)" battle during Indonesia independence war. Surabaya is a multi-ethnic and multi religion city. It is very vibrant city that offers dynamic life style. In addition to Indonesian language, the majority of residents speak a dialect of Javanese called "Surabayaan". English is also widely spoken at major shops, hotels and universities. Surabaya is also famous for many landmarks such as Tugu Pahlawan (Heroes Monument), Suro and Boyo Statue (Surabaya City's Symbol), Suramadu Bridge (the longest bridge in Indonesia), and many more.

Insitut Teknologi Sepuluh Nopember

Being one of the best universities in Indonesia, the vision of Insitut Teknologi Sepuluh Nopember (ITS) is to be an innovative research university with international recognition. ITS, which was founded in 1961 and consists of 10 faculties, offers courses and research in science and technology. Currently ITS has more than 22,000 students, 1,000 academic staffs, and 1,000 non academic staffs. Located at Eastern area of Surabaya, ITS occupies a large area totaling 180 hectares as its main campus in Sukolilo.

ITS is prominent to provide excellent scientific activities, pleasant natural life environment, very friendly atmosphere, and enormous community spirit. Working together with national and local government, industries, NGOs, community, and all stakeholders including alumni, ITS carries out strategic programs such as integrated internationalization programs, Lab-based-Education (LBE), technopark, eco-campus, comprehensive research and community outreach.

CommTECH Gallery




24 January - 6 February 2018
**Solving Local Problems
with Global Knowledge**

ITS International Office
Recreate Building 1st Floor
ITS Campus, Sukolilo Surabaya 601111 Indonesia
Phone/Fax: +62-31-5923411
Website: www.international.its.ac.id
E-mail: commtech@its.ac.id / internationaloffice@its.ac.id

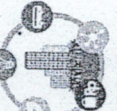
Subcourses

Subcourse A
Sociopreneurship
in Action




The world is continuously facing problems from poverty, health, and climate change which cannot be solved by the government alone. Increasingly, business is seen as one of the initiatives that can drive social change on a continuous basis. This short program will not only introduce participants to the concept of social enterprise but will also provide experience and knowledge on how to build one. The program will cover important aspects of creating a new venture by generating ideas, brainstorming and prototyping, validating and testing the idea, and developing the right business model.

Subcourse B
Sustainable Development
in Developing Countries




In this day and age, Sustainable Development (SD) has become a growing concern all over the world. Not only has it become a topic in many conferences, symposiums, and discussions, SD has also become the core of many programs and development projects. In CommTECH Camp Insight 2018, the multiple facets of SD will be discussed along with the implementations of SD in developing countries like Indonesia. Some of the facets that include sustainable agriculture, sustainable energy, sustainable transportation, sustainable building, sustainable tourism, sustainable life style, sustainable packaging, and sustainable product will be explored and analyzed. This program is designed to suit bachelor, master, even doctoral students with or without specific knowledge in SD.

Subcourse C
Managing Sustainable
Coastal Management



Coastal area is a transitional area between land and ocean which has a physical boundary. As the largest archipelago country in the world, Indonesia's coastal areas are very strategic with their comparative and competitive advantages that could be the deciding factor towards the national development. To optimize the use of marine and coastal resources, policy intervention through spatial planning, government handling, and cooperation between stakeholders including public and private sectors is required. In CommTECH Camp Insight 2018, this sub course will encourage the participants to discuss and simulate the management of coastal planning in this archipelago country. The highlights in this subject consist of Coastal Planning Policies, Integrated Coastal Zone Management (ICZM), Coastal Risk Management, and Coastal Tourism. This program is designed to suit bachelor, master, even doctoral students with or without specific knowledge in coastal development and planning.

Subcourse D
Exploring Indonesian
Art & Culture



Indonesia is a country that consists of thousands of islands. Those islands are home to many kinds of ethnics and cultural beliefs. There are approximately 600 ethnics spread across the provinces and each of them has different folkways, habits, even arts and traditions. Because of this diversity, exploring the ethnics & cultures of Indonesia will provide an exciting and fascinating experience as participants will get more understanding about Indonesia. This subcourse will invite the participants to explore the folkways and cultures through different approaches, such as understanding Indonesian People through ethno-photography while taking pictures of beautiful scenery of Indonesia. Not only will participants observe and explore, they will also engage several activities, such as Traditional Food Packaging and Traditional Toys Workshop.

Participants' Testimony

Vadim Karelin
(CommTECH Camp Highlight 2015)
Novosibirsk State University (NSU), Russia



"It's started about 1.5 years ago when I was looking for some interesting projects and then suddenly saw this program in Surabaya. Indonesia is really far from Russia both in distance and culture ways. And it was a first big surprise for me, Indonesian people are so polite, cheerful, and friendly every time I asked advice and help from CommTECH super team! I guess the most popular question was: is it spicy?"

The second big surprise was our schedule with a lot of interesting events! When I first time saw that in one day we should wake up at 3 am—I thought it's a mistake or joke, but no! And I appreciate every moment with CommTECH team and participants. And the third important thing — it's participants. I have a lot of big (BIG!) friends from this program and we still see each other even despite the fact that we live in different part of world!

The last thing that I wanna say is that during CommTECH even it is possible to sleep as much as you want — but nobody do this. Every new day — it's a new story! So be a part of it, don't miss it!"

Jie Lin
(CommTECH Camp Highlight 2016)
Beijing Institute of Technology (BIT), China



"I would highly recommend CommTECH to my peers as it is a chance to learn from a diverse and dynamic group of people coming together for the purpose of sharing knowledge, learning and getting new angles on research. All CommTECH participants have the unique opportunity to come together to explore and discuss critical issues in a global perspective that require multidisciplinary approaches. CommTECH courses are fun, but intense. This program taught me to think deeper, out of the box and showed me how to integrate studying across multiple disciplines. If you want to learn more, just apply!"

Vaisai Thakkar
(CommTECH Camp Insight 2017)
Royal Melbourne Institute of Technology (RMIT) University, Australia



"One of the most cherished part of my life. So my journey began on 22/01/2017. Little did I know, this journey will come up with many different surprises. I was lucky enough to get an overview about the Indonesian culture in such a short period of mere ten days, including food, traditional dance and music.

The entire ITS team, especially Mr. Wahyu, and all the committees put in their efforts to make every moment count during our stay. The trip to Mount Bromo followed by rafting has surely been an unforgettable experience for everyone.

I was lucky enough to meet people from different nationalities. Definitely made a lot of new friends. Our visit to SME's made me realize how communities come together to accomplish their common goals by serving the society, empowering themselves as well as generating a bit of revenue. I have a lot to say, but due to shortage of words, I come 'up my entire experience at CommTECH Insight 2017 as a beautiful and a memorable one."

Wachirawit Saengroikittikhun
(CommTECH Camp Highlight 2015)
King Mongkut's University of Technology Thonburi (KMUTT), Thailand



"CommTECH Camp Highlight 2015 gives me great opportunity to explore Surabaya Indonesia that is beautiful and has cultural diversity and lifestyle in harmony with nature. Almost 2 weeks in Surabaya I did many things that I haven't done before, such as making own batik, play Angklung, traditional music and dances, visit to Surabaya local community, trip to Mount Bromo Indonesia's most famous volcano and rafting. All these activities created very great experience and great memories for me. Moreover I have new friends from different countries, different culture. After all, I'd like to thank all committees and volunteers from ITS who dedicated to work and facilitate all participants warmly."

Program Schedule

Day 1	Opening Ceremony Program Overview Softskill Development Campus Tour
Day 2	Courses Ethnophotography Session Welcoming Dinner
Day 3	Courses Indonesian Language Course Traditional Games
Day 4	City Tour: Urban Track and Surabaya Smart City SME Visit
Day 5	City Tour: Historical Track Shopping Day
Day 6	Traditional Music and Dance Courses
Day 7	Courses
Day 8	Site Visit Government Project
Day 9	Project
Day 10	Project
Day 11	Fun Sport Depart to Bromo Mountain
Day 12	Trip To Bromo Mountain Rafting Back to Surabaya
Day 13	Free Time Bonding Session
Day 14	Internal Review Official Dinner with Surabaya City Mayor
Day 15	Presentation about Home University at ITS Exhibition & Final Presentation Farewell Dinner



Registration Form

Application for CommTECH Camp Insight 2018

(24 Jan – 6 Feb 2018)

please choose the sub courses below:

Sub Course A : Sociopreneurship in Action

Sub Course B : Sustainable Development in
Developing Countries

Sub Course C : Managing Sustainable Coastal
Development

Sub Course D : Exploring Indonesian Art & Culture

Personal Information

Last Name:

First Name:

Date of Birth:

Passport Number:

Institution / University :

Country of Citizenship:

Male

Female

Please describe your motivation to join this program: (please use additional paper if needed)

NOTE: Please describe your motivation thoroughly as we will select the scholarship grantees based on your motivation statement

Current Mailing Address

Street:

City:

State:

Zip/Postal Code:

Country:

Email:

Mobile Phone :

Telephone (Home) (Including area/country code):

Permanent Address (only if different from current mailing address)

Street:

City:

State:

Zip/Postal Code:

Country:

Mobile Phone:

Home Phone:

Emergency Contact Information

Last Name:

First Name:

Street:

City:

State:

Zip/Postal Code:

Country:

Phone (including area/country code):

Email:

Academic Information (only if you are a student)

Degree : Bachelor Master Doctoral

Major:

Current Academic Status:

First Year Second Year Third Year Fourth Year

Institution Information (only if you are a lecturer /staff)

Current Position:

Unit / Department / Faculty :

Travel Plan (You can fill further details later)

Date of Arrival : dd/ mm/ yy | Flight Number:

Date of Departure : dd/ mm/ yy | Flight Number:

Additional Information

Join Rafting Yes No

Food which you are allergic to:

Restricted Food:

Phobia:

Shirt Size: <input type="checkbox"/> S, <input type="checkbox"/> M, <input type="checkbox"/> L, <input type="checkbox"/> XL		
Costs		
Course Fee	USD 1,600,- You may choose the category for the payment you apply for: <input type="checkbox"/> Full Scholarship <input type="checkbox"/> 50% Scholarship (Paid USD 800) <input type="checkbox"/> Partial Scholarship (Paid USD 1,000) <input type="checkbox"/> No Scholarship (USD 1,600)	
Payment		
Please be sure to check the authorization box below:		
<input type="checkbox"/> Wire transfer to: Account Number : 1400016627656 Account Name : Hubungan Internasional ITS Bank Name : PT Bank Mandiri Bank address : Surabaya Swift Box : BMRIIDJA <input type="checkbox"/> Transfer through Western Union to: Name: Cahyani Satiya Pratiwi Address: Jl Kebonsari IV/22 A, Kecamatan : Jambangan, RT/RW. 02/02. City : Surabaya Postal Code: Country : INDONESIA		
Academic/Professional Reference		
Please provide the name and contact information of your reference.		
Last Name:	First Name:	
Street:		
City:	State:	Zip/Postal Code:
Phone: (including area/country code)	Email:	
Occupation:	School/Faculty:	
Agreement		
I have read the program descriptions, including the application policies and procedures, and I feel that I would benefit from CommTECH program. I certify that all information I have provided in this form is correct and accurate to the best of my knowledge.		
_____ (If applicant is under 18 years old of age, parental approval is required.)		Date :

For you want to join this program, please send this registration form with:

- Scanned passport
- One recommendation letter from your university
- Scanned students/staffs/lecturers I.D or statement letter that you are staff or lecturers from your university

Please complete the registration before 29 December 2017

CONTACT PERSON:

Mr. Muh. Wahyu Islami PM, S.T. / Mr. Rayhan Ibnu Shiena

International Office

Institut Teknologi Sepuluh Nopember (ITS)

Rectorate Building 1st Floor

Campus ITS Sukolilo Surabaya 60111, Indonesia

Telp/Fax : +62-31-5923411

Email: commtech@its.ac.id / internationaloffice.its@gmail.com